

# NX2-CVH8N

## Narrow Type Vertical NC Lathe



Tooling Layout

### Specification

Spindle	φ120 Spindle
	(Short Quill Type)
Tooling	MAX2800r.p.m
	V8 Turret
Option	Auto Extracter

NX2-CVH8N is narrow type vertical NC Lathe, its width is 1,000 mm.

This machine is easy to operate from loading height is 1,000 mm.

※ This machine can install work-extractor as a option.



# NX2-VH8N

## Vertical Type CNC Lathe



- *Compact Design*
- *Easy Loading*



( Work Sample )



Type V-6 Turret

### Specification

Spindle	Φ 90~180
	8inc~ 36inc chuck
	MAX 4,500r.p.m ( φ 90)
Tooling	Gang type, V6N, V8N turret
Tailstock	φ 80 spindle
	φ 120 Built in spindle
Option	Work holder
	Auto loader
	Chip conveyor Others



# NX4-VH6NT/RB

Turning & Burnishing Machine  
For Disk Brake

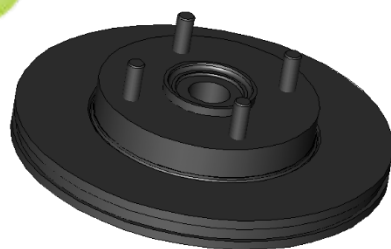


Highly complex and accurate workpieces can be turned and burnished both sides.

**C**ompact vertical type

**S**mooth chip disposal

**E**asy loading-unloading



( Work Sample )



Tooling Layout

## Specification

Spindle	φ 120
	Special plate chuck
	MAX 2500r.p.m
Tooling	Gang type, V6N turret
	Roller burnish device
Tailstock	φ 80 spindle
Option	Chip conveyor Others

**HORIBE**  
MACHINERY CO.,LTD.

# NX3-VH8/AT20

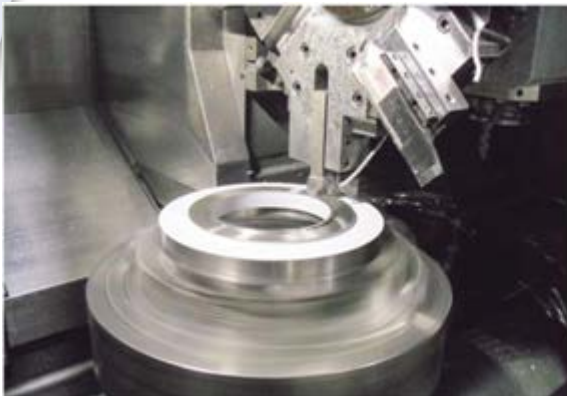
## *Big Diameter Combined Vertical NC Lathe*

NX3-VH8/AT20 can make big diameter cutting by installed 22 inch scroll chuck.

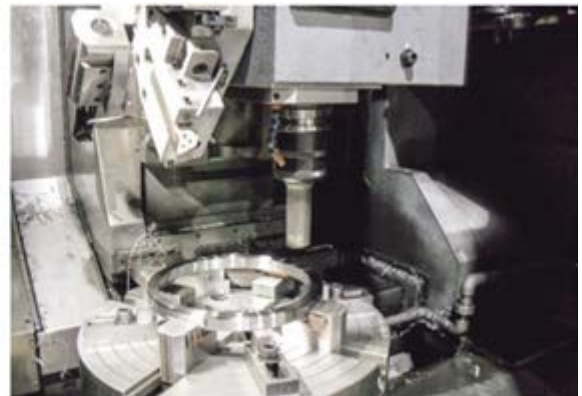
And this machine can make drilling/milling by spindle system for BT-50 on one chucking.

### Specification

Spindle	φ 150 Quill-Spindle
	22 inch scroll chuck
Tooling	ATC BT-50 20PC
	MAX3500 r.p.m
	V8 Turret
Option	Chip conveyor



Tooling Layout



Milling Tooling Layout



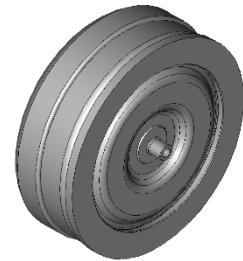
# NX4-V2H6N

## 2 TURRETS VERTICAL CNC LATHE



- *Space saving design*
- *Double productivity per machine*
- *Complete chip flow*

NX4-V2H6N is a vertical NC lathe with 2 spindles and 2 turrets specification. It is possible to shorten the cycle time by improving the workability of attaching and detaching and simultaneous processing of two pieces.



( Work Sample )



Tooling Layout

### Specification

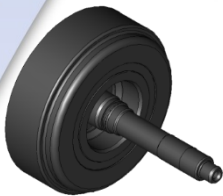
Spindle	$\phi$ 90 ~ 120 spindle
	8 ~ 12 chuck
	MAX 4,500r.p.m ( $\phi$ 90 )
Tooling	Gang tool, V6N turret
Option	Tailstock
	Measuring equipment
	Chip conveyor Others

**HORIBE**  
MACHINERY CO.,LTD.

HORIBE MACHINERY CO., LTD. 2-11, Mataho-cho, Nishi-ku, Nagoya, Japan 451-0014

# NX2-VH6NT/U

Upper Spindle Type  
Vertical CNC Lathe Machine



( Work Sample )



Tooling Layout

NX2-VH6NT/U is a vertical CNC lathe setting a spindle on the upper part and a tailstock on the lower so that the chip fall smoothly into a discharge port under the tailstock. Also, the upper spindle is not slide in consideration of rigidity.

## Specification

Spindle	φ 120 spindle
	Special chuck
	MAX 2,000r.p.m
Tooling	Gang type, V6N turret
Tailstock	φ 80 spindle
	Tail slide
Option	Chip conveyor Others

**HORIBE**  
MACHINERY CO.,LTD.

# NX4-V2H8S/U

Upper 2 spindles type vertical CNC lathe



- Space saving design
- Double productivity per machine



Top spindle layout



( Work Sample )

NX4-V2H8S/U is a vertical CNC lathe setting two spindles on the upper part

so that the chip fall smoothly into a discharge port. Also the upper two spindles are not slide in consideration of rigidity. The productivity is very high because of the 2 spindles.



Tooling Layout

## Specification

Spindle	$\phi$ 120 spindle $\times$ 2
	8inches $\sim$ 12inches chuck
	MAX 3,000r.p.m.
Tooling	Gang tool, V8S turret, Rotating tool
Options	Autoloader
	Measuring equipment
	Chip conveyor Others

**HORIBE**  
MACHINERY CO.,LTD.

# NX3-VH8D

## Vertical Turning Center



- *Vertical compact design*
- *Simultaneous processing of one chuck*
- *Good workability*



( Work Sample )

NX3-VH8D is a BT-40 taper vertical machining center plus 8"chuck vertical CNC Lathe. Highly complex and accurate workpieces can be turned, milled, drilled and tapped on machine.



Tooling Layout

### Specification

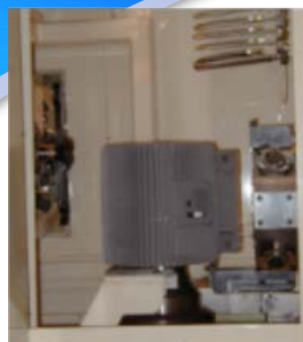
Spindle	φ 120 spindle
	8inches ~ 12inches chuck
	7.5Kw AC,SP motor
Tooling	V8 Turret & BT-40 taper
Options	Robot
	IN / OUT work stocker
	Chip conveyor Others





# NX5-VH8D/24A

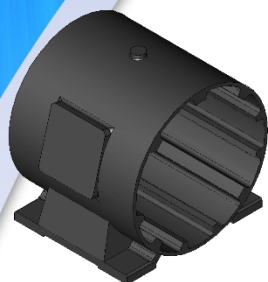
## Vertical Multicenter



Turning process



Milling process



( Work Sample )

NX5-VH8D/24A is a #40 taper, horizontal machining center with 24STA.ATC plus  $\phi 150$  spindle, vertical CNC lathe. This machine solve the rigidity problem of usual multicenter. Because it has a 8-station turret and milling head separately. And the backside 24STA.ATC means all kinds of cutting.



ATC magazine 24ST

### Specification

Spindle	$\phi 150$ spindle
	Special mandrel chuck
	22Kw AC,SP motor
Tooling	V8 turret
ATC.	$\phi 65$ spindle
	BT-40 taper
	24ST A.T.C. magazine
Options	Robot
	5.5Kw AC,SP motor
	Chip conveyor Others

**HORIBE**  
MACHINERY CO.,LTD.

# NX3-VH8N/12A

## Vertical Turning Center



Vertical turning unit



Horizontal type



( Work Sample )

NX3-VH8N/12A is a #40 taper, vertical machining center with 12st. ATC plus 10"chuck, vertical CNC lathe. Highly complex and accurate workpieces can be turned, milled, drilled and tapped on one machine.



Tooling layout

### Specification

Spindle	φ 120 spindle
	8inches ~ 12inches chuck
	7.5Kw AC,SP motor
Tooling	V8 turret
ATC.	φ 65 spindle
	BT-40 taper
	12ST A.T.C. magazine
Options	Robot
	5.5Kw AC,SP motor
	Chip conveyor Others

**HORIBE**  
MACHINERY CO.,LTD.

# NX3-SPGT

## CVT pulley shaft processing machine



( Work Sample )

CVT pulley shaft processing machine with our proprietary HSC unit. Turning and grooving can be done in one chucking operation. The HSC unit was developed specifically for grooving and has excellent rigidity, reducing machining time significantly.



▲HSC unit



▲Tooling

### Specification

Spindle	MAX 2000r.p.m.
	8~12 inc chuck
	7.5Kw AC motor
Tooling	Toothed blade & HSC unit
Tail stock	φ120 Spindle
Option	Dispensing device
	Spindle indexing function
	Chip conveyor, etc.

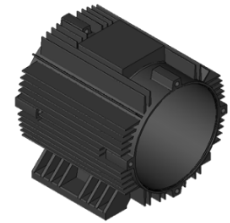


# NX4-SP2T

## 2Turrets Horizontal CNC Lathe



- *Simultaneously machining both ends*
- *Easy loading and unloading*



( Work Sample )

NX4—SP2T is a 2turret—horizontal CNC Lathe Machine.

The positioning of the double turrets against the spindle provides for quick and easy setting up. The simultaneously machine of both ends will produce Machining of the highest quality.



Type V-6 Turret

### Specification

Spindle	φ 120 spindle
	Special mandrel chuck
	11Kw AC,SP motor
Tooling	V2 (V6) turret × 2
Tailstock	φ 80 spindle , MT-5
Options	Work holder
	Chip conveyor Others



# NX2-SPSG

CNC SPECIAL PURPOSE MACHINE  
For Piston Rods



( Work Sample )



▲Piston-Side Tooling



▲Upper-Side Tooling



▲Measurement

NX2 SPSG is a special purpose machine for producing piston rods. This machine is ideal for systematizing your automated production line. For example Workpiece stocker → Piston side cut → Upper side cut → Measurement (Feed-back function) → Out stocker. The automated line is very simple, compact and features amazing high speed. The one-touch set-up jig greatly reduces the need for a complicated jig change. This is our cutting-edge solution for the production of piston rod.

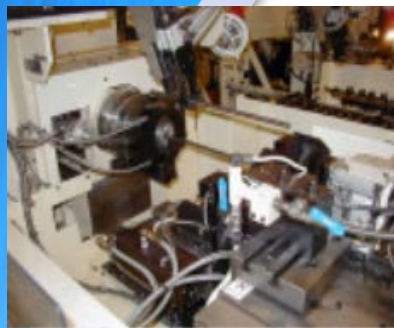
## Specification

Spindle	φ 70 spindle
	Special front type chuck MAX 6,000r.p.m
Tooling	Gang type
Options	Auto loader
	Measurement device
	Chip conveyor Others

**HORIBE**  
MACHINERY CO.,LTD.

# NX2-MG

CNC SPECIAL PURPOSE MACHINE  
For Piston Rods



▲Tooling



▲Measurement



▲Palletizing

NX2 MG is a special purpose machine for piston rod production. With this machine, you can quickly systemize your automated production line, it consists of workpiece stocker→#1 cut→measurement→#2 cut→ palletizing.

The automated line is very simple and compact but features exceptionally high speed operation. The one touch set-up jig greatly reduces the need for a complicated jig change.

This machine is our cutting edge solution to production of piston rod.

## Specification

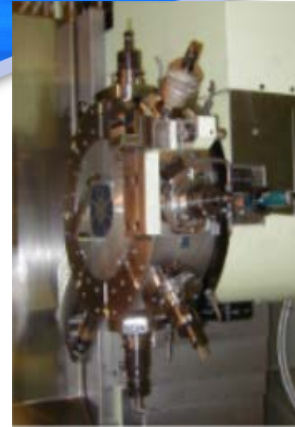
Spindle	φ 70 spindle
	Special collet chuck
	MAX6,000r.p.m
Tooling	Gang type
Options	Auto loader
	Measurement device
	Chip conveyor Others

**HORIBE**  
MACHINERY CO.,LTD.

HORIBE MACHINERY CO., LTD. 2-11, Mataho-cho, Nishi-ku, Nagoya, Japan 451-0014

# NX3-M8DT

## Horizontal Turning Center



( Work Sample )

NX3-M8DT is a BT-40 taper machining center plus 8"chuck horizontal CNC Lathe with tailstock. Highly complex and accurate workpieces can be turned, milled, drilled and tapped on machine. This machine is perfect for shaft workpieces.



Tooling Layout

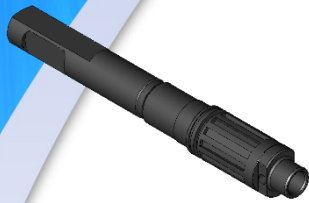
### Specification

Spindle	$\phi$ 120 spindle
	8inches~12inches chuck
	7.5Kw AC,SP motor
Tooling	V8 turret & BT-40 taper
Tailstock	$\phi$ 80 spindle
Options	Robot
	IN / OUT work stocker
	Chip conveyor Others



# NX3-M8DT

## Horizontal Turning Center



( Work Sample )

NX3 M8DT is a BT-40 taper machining center center plus 8" chuck horizontal CNC Lathe with tailstock. Highly complex and accurate workpieces can be turned, milled, drilled and tapped on machine. This machine is perfect for shaft workpieces.



Tooling Layout

### Specification

Spindle	$\phi$ 120 spindle
	8inches ~ 12inches chuck
	7.5Kw AC,SP motor
Tooling	V8 Turret & BT-40 taper
Tailstock	$\phi$ 80 spindle
Option	Robot
	IN / OUT work stocker
	Chip conveyor Others





# NX3-HML/12A

*CNC Turning Center for Shaft workpieces*



Layout

NX3-HML/12A is a #40 taper, vertical machining center with 12st. ATC plus 10" chuck, CNC lathe. Highly complex and accurate workpieces can be turned, milled, drilled and tapped on one machine. Long stroke tailstock and work rest device are capable of machining short and long shaft (MAX 1200mm) .



( Work Sample )



Tooling

## Specification

Spindle	$\phi$ 120 spindle
	10inches 3jaw chuck
	15Kw AC,SP motor
ATC.	$\phi$ 65 spindle
	BT-40 taper
	12ST A.T.C. magazine
Tailstock	5.5Kw AC,SP motor
	$\phi$ 120 spindle
Options	Robot
	Work rest
	Chip conveyor Others

**HORIBE**  
MACHINERY CO.,LTD.

# NX4-SP6N/CS

*Twin Turret, Double-Faced Spindle  
CNC Lathe Machine*



( Work Sample )



▲Tolling ( V6 Turret )



▲L-Side Tooling



▲R-Side Tooling

**NX4-SP6N/CS features a double-faced spindle in the center and a turret on either side. The simultaneous machining on both ends produces machining of the highest quality ensuring the highest productivity. There is a limitation of work shape that can be clamped because this is a collet chuck specification.**

## Specification

Spindle	Special spin chuck
	MAX 2,500r.p.m
Tooling	V6N turret × 2
Option	Gantry loader
	Measurement device
	Chip conveyor Others

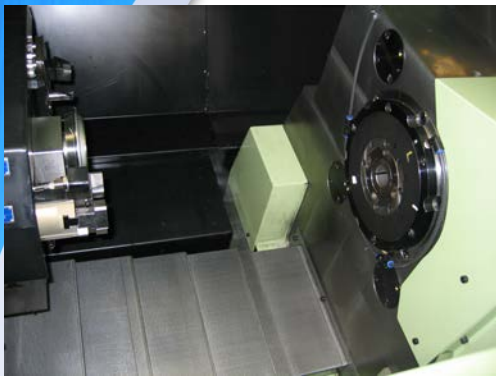
**HORIBE**  
MACHINERY CO.,LTD.

# NX4-SPG/CS

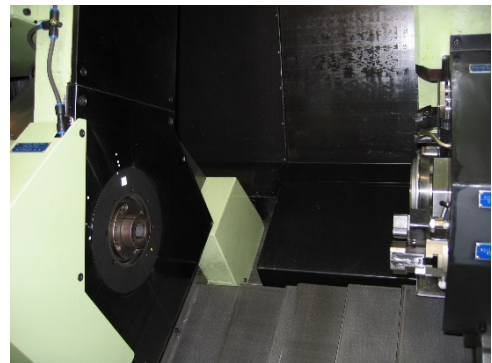
*Both side simultaneous processing machine*



( Work Sample )



▲ Tooling



▲ Tooling

Simultaneous processing machine at both ends equipped with a special spin chuck in the center.

Simultaneous left and right machining is possible by one-chucking, and the coaxiality is dramatically improved. processing time can be reduce by using Simultaneous machining.

## Specification

Spindle	MAX 2500r.p.m.
	Special Spin Chuck
Tooling	Toothed blade × 2
Option	IN / OUT Work stocker
	Workpiece Positioning
	Chip conveyor, etc.

**HORIBE**  
MACHINERY CO.,LTD.

# NX4-SP6NT

2Turrets Horizontal CNC Lathe



( Work Sample )



▲Tooling

- *High Speed*
- *2 Turret*
- *Simultaneously machining both ends*

NX4-SP6NT is a 2 turret-horizontal CNC lathe machine. The 2 turrets are set upper and lower so that the simultaneously machining of top and bottom will produce machining to achieve the highest productivity. The tailstock device is capable of machining short and long shafts. There is a limitation of work shape that can be clamped because this is a collet chuck specification.

Specification	
Spindle	φ 90 spindle
	8inc 3jaw chuck
	MAX 2,500r.p.m
Tooling	V6N turret × 2
Option	Gantry loader
	Measurement device
	Chip conveyor Others

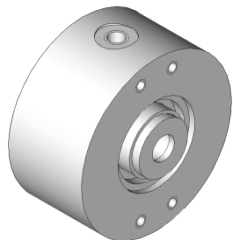
**HORIBE**  
MACHINERY CO.,LTD.

# NX4-SP2H12D

## Twin Spindle Turning Center



▲Tooling



( Work Sample )

- 2Turret ( Milling Spindle )
- Bar Feeder ( Option )
- Measurement Device ( Option )
- Pallet Stocker ( Option )

NX4-SP2H/12D features a multifunction V-12 turret and a spindle on either side. This machine is ideal for systematizing your automated production line. For example bar-feeder → The surface production by L-side spindle and turret → Back side production by R-side spindle and turret → Measurement ( Including feed-back function) → Palletizing. The automated line is very simple and compact and features amazing high speed combined with a bar-feeder system and gantry loader.

### Specification

Spindle	L $\phi$ 90 & R $\phi$ 120
	MAX 3,500r.p.m
Tooling	V12D turret × 2
Option	Gantry loader
	Measurement device
	Chip conveyor Others

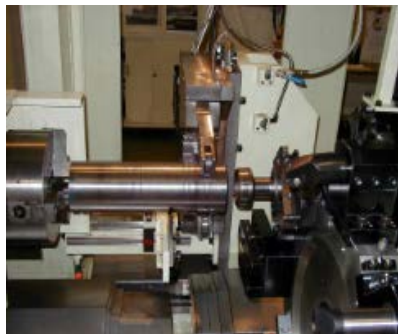


# NX2-M8NT

*For Long Shaft Workpieces  
CNC Lathe Machine*



▲Tooling



▲Tooling



( Work Sample )

This machine is designed for long shaft workpiece machining. It is suitable up to a MAX  $\phi$  225mm, L=1000~2500mm. This machine can be used for machining flange parts with one chucking by the tailstock and the workrest device.

## Specification

Spindle	$\phi$ 150
	MAX 1,500r.p.m
Tooling	V8N turret
Tailstock	$\phi$ 70 special spindle
Option	Gantry loader
	Measurement device
	Chip conveyor Others

**HORIBE**  
MACHINERY CO.,LTD.

HORIBE MACHINERY CO., LTD. 2-11, Mataho-cho, Nishi-ku, Nagoya, Japan 451-0014

# NX2-SPG Auto Bar

## Bar Work CNC Lathe



( Work Sample )

NX2-SPG Auto Bar is a lathe machine for Bar Work. This machine is suitable for turning and cutting long ring workpieces. The machine features our special unloader system, and the complete workpiece will be stocked in the rotary workpiece stocker.



Tooling Layout

### Specification

Spindle	~ MAX $\phi$ 280 ( $\phi$ 180 )
	3 jaw chuck / Collet chuck
Tooling	~ MAX 18Kw AC,SP motor
	Special gang type
Option	NC bar feeder ( MAX 4m )
	Un loading device
	Work stocker
	Chip conveyor Others

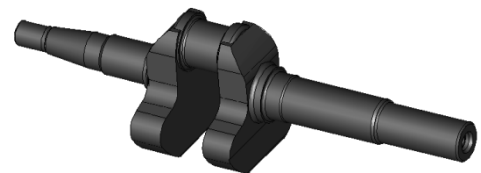


# NX2 NX4 M8D/CM

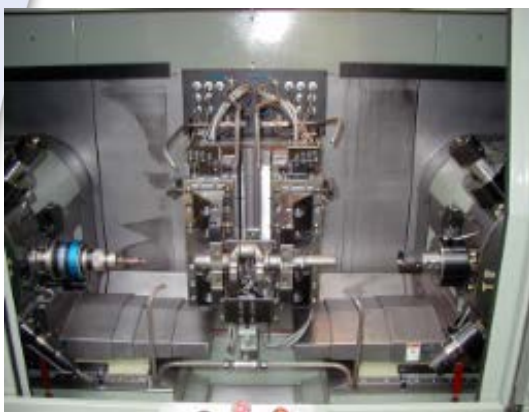
## Multifunctional Centering Machine



M8D/CM is a multifunctional centering machine with #40 taper rotary tool turret from side by side. Highly complex and accurate workpieces can be center drilled, milled, drilled and tapped on one machine.



( Work Sample )



Tooling Layout

### Specification

Tooling	V8 turret & BT-40 taper
	7.5Kw AC,SP motor
Chuck	Centripetal double vice chuck
Options	Robot
	Chip conveyor Others





# NX5-MG/CM

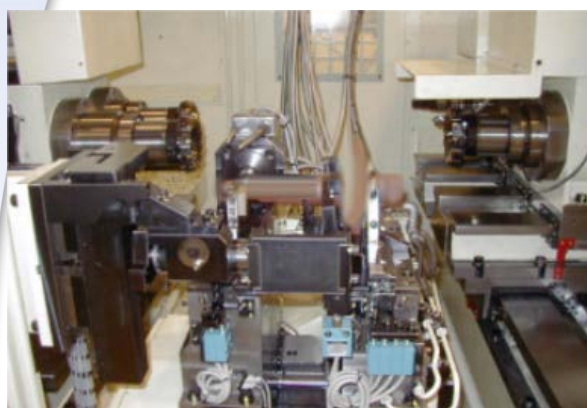
High rigidity centering machine



NX5-MG/CM is a high rigidity centering machine with  $\phi 90$  spindles. Workpieces can be drilling, facing, boring, center hole drilling on one machine by 5 spindles. The adjusting and keeping precision are easy because all axis are NC controlled.



( Work Sample )



Tooling Layout

## Specification

Tooling	$\phi 90$ special spindle
	5.5Kw AC,SP motor
Chuck	Centripetal double vice chuck
Options	Robot
	Chip conveyor Others



# HSN-2H-PM(M)

## CRANKSHAFT PIN-MILLING MACHINE



対象ワーク例



HSN-2H-PM(M) is a dedicated machine for processing of the pin part of the medium-sized crankshaft. The headstock of right and left can be completely synchronized by pulse synchro control. Two cutter heads are carried and can process two pins at the same time. It is easy to perform the programming by the adoption of the interactive operation panel.



ツーリングレイアウト

### Specification

Spindle	$\phi$ 150 & $\phi$ 100 spindle
	10type 5jaws & 8type 2jaws
Tooling	Milling unit $\phi$ 120
	7.5Kw + inverter
Option	$\phi$ 500 cutter
	Chip conveyor Automatic transfer Others

**HORIBE**  
MACHINERY CO.,LTD.

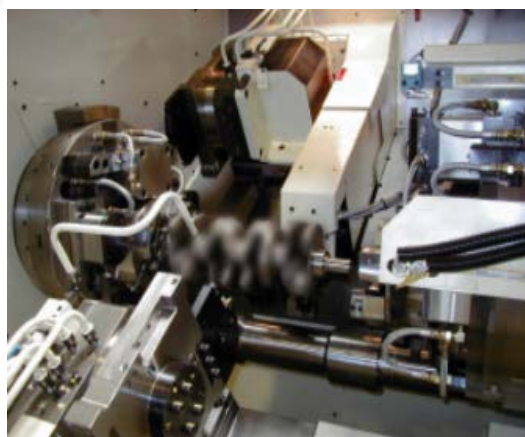
# HSN-2H-<sup>N2</sup> <sup>N4</sup>

Crankshaft Pin Grooving Machine



( Work Sample )

Special eccentric chucking system provides highly accurate crankshaft grooving. Also, servomotor and curvic coupling system can be free setting of pin-phase index.



Tooling Layout

## Specification

Spindle	φ 200 spindle × 2
	Special eccentric chucking system
	15Kw AC,SP motor
	Synchronous axis
Tooling	V4N turret ( V8N Turret)
Options	Automatic transfer
	Main shaft moving slide
	Chip conveyor Others

**HORIBE**  
MACHINERY CO.,LTD.

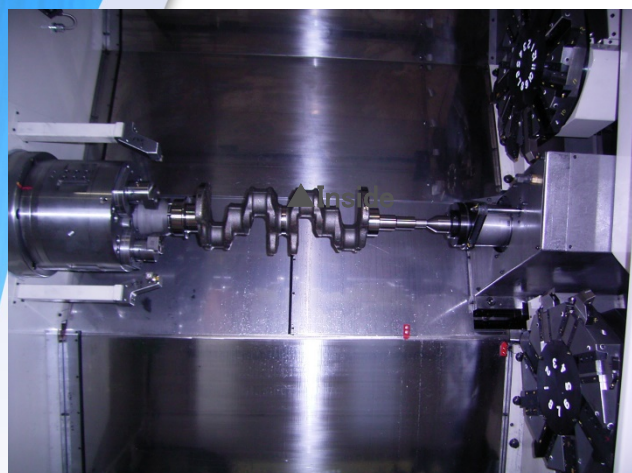
# NX5-SP8NT

## Crankshaft journal milling machine



( Work Sample )

Crankshaft journal milling machine with two upper and lower turrets.  
Balanced cut with two upper and lower turrets contributes to high accuracy, high rigidity and reduced machining time. Inclination of frame angle of 80 degrees is optimum structure for chip processing.



▲ Tooling

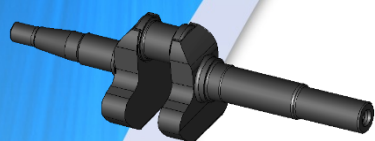
### Specification

Spindle	MAX 1500r.p.m.
	Special Face Drive Chuck
	11Kw AC Motor
Tooling	V12 upper turret /V8 Lower turret
Tail stock	φ120 Spindle
Option	Chip conveyor, etc.



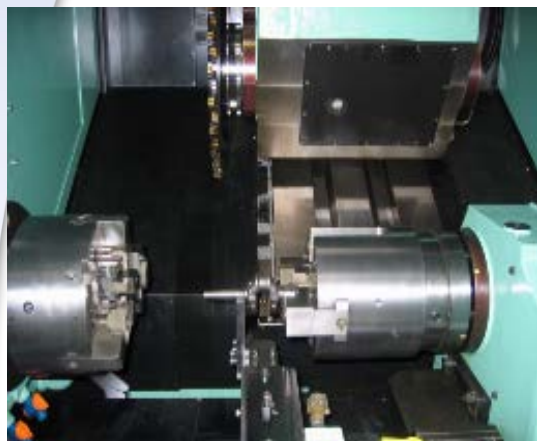
# HSN-2H-PM(S)

## CRANKSHAFT PIN-MILLING MACHINE



( Work Sample )

HSN-2H-PM(S) is a dedicated machine for processing of the pin part of 1 pin crankshaft. The headstock of right and left can be completely synchronized by pulse synchro control. It is easy to change the setup because of the simple mechanical structure. It is easy to perform the programming by the adoption of the interactive operation panel.



Tooling Layout

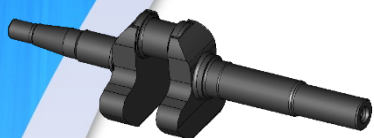
### Specification

Spindle	$\phi$ 150 & $\phi$ 100 spindle
	10type 5jaws & 8type 2jaws
Tooling	Milling unit $\phi$ 120
	7.5Kw + inverter
	$\phi$ 500 special cutter
Options	Automatic transfer
	Chip conveyor Others



# HSN-2H-N2

## CNC Lathe Machine for Crankshaft



( Work Sample )

This machine can be machining crankshaft centering around pin-part using a special eccentric chucking system. It produces machining of the highest quality.

Also, the simultaneous machining of shoulder-part and body-part by double feed-unit provides the highest productivity.



Tooling Layout

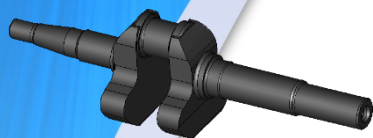
### Specification

Spindle	φ 150 spindle × 2
	Special eccentric chuck
	11Kw AC,SP motor
Tooling	Synchronous axis
Options	Gang tool
	Automatic transfer
	Chip conveyor Others

**HORIBE**  
MACHINERY CO.,LTD.

# HSN-2H-N2

*CNC Lathe Machine for 1P Crankshaft*



( Work Sample )

HSN-2H-N2 is our incredibly special high performance CNC lathe machine for 1P crankshaft production. This machine will turn a crankshaft centering around the pin-part by utilizing a special eccentric chucking system. It can also be used for grooving the shoulder part and turning the body part of a crankshaft through the use of a high speed 8-station turret. We have designed it for maximum flexibility so you can use it with our loader system in a small space.

This is the best machine for the advanced production of 1P crankshaft.



Tooling Layout

## Specification

Spindle	$\phi$ 120& $\phi$ 70 spindle
	Special eccentric chuck
	11Kw AC,SP motor
	Synchronous axis
Tooling	V8N turret
Options	Automatic transfer
	Chip conveyor Others

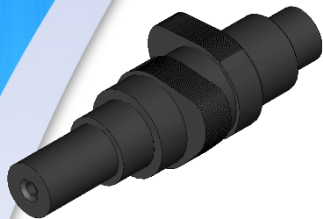
**HORIBE**  
MACHINERY CO.,LTD.

# NX3-SP6NT/CP

MILLING & TURNING MACHINE for Camshaft

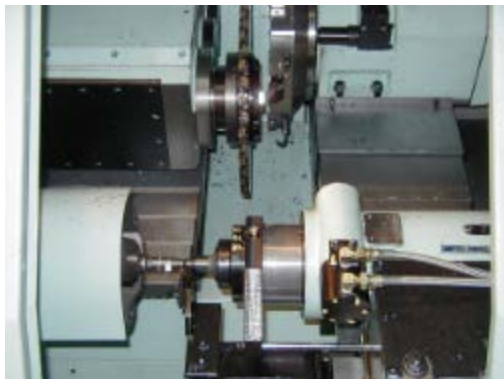


▲Tooling



( Work Sample )

NX3-SP6NT/CP is a V6-turning turret and a milling unit so that the machine is capable of turning and milling machining on one machine. This is perfect for advanced camshaft machining.



▲Tooling

## Specification

Spindle	φ 90 spindle
	8 inc COMP chuck
	MAX 1,500r.p.m.
Tooling	V6N turret
	Milling unit
Tailstock	Built-in type
Options	Robot
	Chip conveyor Others

**HORIBE**  
MACHINERY CO.,LTD.



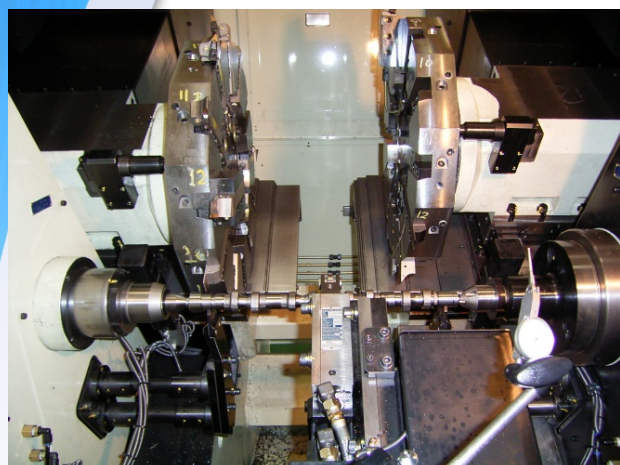
# NX6-SP12T

## Camshaft journal machine



( Work Sample )

Camshaft journal milling machine with 2 upper turrets. With a face driver and live center, all journaling is possible. The two upper turrets allow the operator to get closer to the workpiece, allowing for easy loading and unloading of the workpiece and contributing to increased productivity.



▲ Tooling

### Specification

Spindle	MAX 3000r.p.m.
	Face driver
	7.5Kw AC Motor
Tooling	V12 turret × 2
Tail stock	φ120 Spindle
Option	Rest device
	Chip conveyor, etc.



# NX3-M/CP

MILLING MACHINE for Camshaft



( Work Sample )

NX3 M/CP is a cam-milling machine for camshaft.

Right and left spindle are joined by mechanical synchronizer shaft.

Center standardizing chucking system and 3-point centripetal rest device produces machining of the highest quality.



▲Tooling

## Specification

Spindle	φ 90 spindle
	8inc COMP chuck
Tooling	Milling unit
Work rest	3-point centripetal type
Options	Robot
	Chip conveyor Others

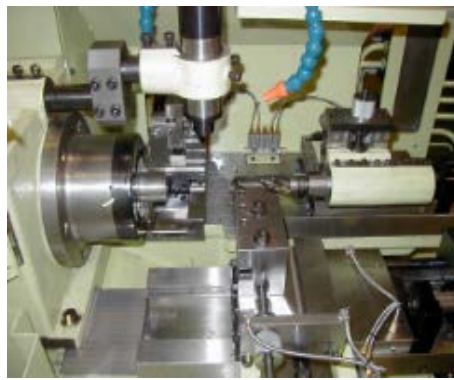
**HORIBE**  
MACHINERY CO.,LTD.

# HB-65 / 85 / 105

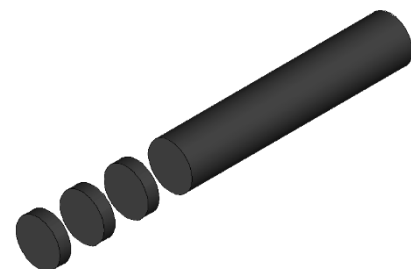
Hydraulic Auto-Lathe With Bar Feeder



Tooling Layout



Tooling Layout



( Work Sample )

HORIBE-HB series is a very compact hydraulic auto-lathe with bar-feeder. This machine is as tough and rigid as you would expect. The bar-feeder can feed max 4.0m (13ft) length bar-work. Spindle-Chuck clamps the bar-work after the position is decided by the work-locator. Next lathe machining and drilling followed by cutting of finished product. Rugged construction and simple mechanism assure reliability. You can't beat the cost-to-performance ratio of the HORIBE HB Series.

Type : HB65 ( MAX WORK DIA  $\phi$  85mm )

Type : HB85 ( MAX WORK DIA  $\phi$  105mm )

Type : HB105 ( MAX WORK DIA  $\phi$  105mm )

## Specification

Spindle	3.7Kw ~
	1500 / 1000 / 700r.p.m.
Tooling	3 ~ 4 slide
	Variety slide-motion
	Drill device
Option	Material supply device

**HORIBE**  
MACHINERY CO.,LTD.

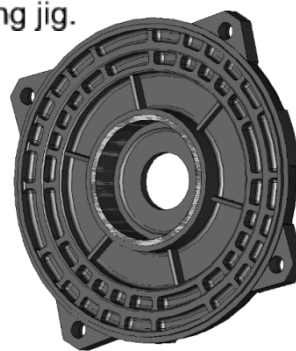
# HS-2H

## Hydraulic Boring Machine



- *Compact Design*
- *Hydraulic specification*
- *2 Spindles*
- *Simple Operation*

HS-2H is a very compact 2 spindles hydraulic boring machine with special clamping jig.



( Work Sample )



Tooling Layout

### Specification

Spindle	$\phi 70$
	Special clamp jig
	MAX 1200r.p.m.
Tooling	Boring bar

