

GE460H

TAPER
40

PALLET
400

Enshu
JAPAN

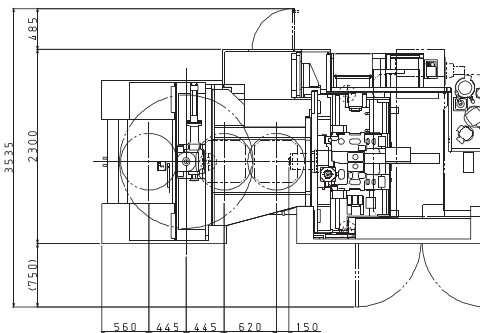
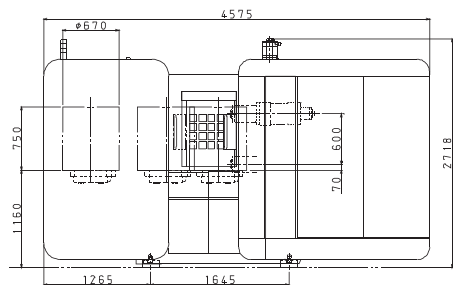
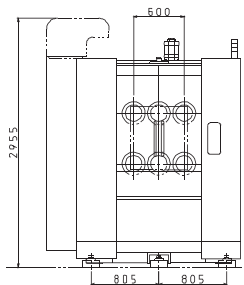


**OUT-PERFORM
OUT-PRODUCE
OUT-LAST**

Advancing the technology of ultra-high performance for stand-alone production, lean lines or agile machining systems.

- 90M/min (3,543 IPM) rapid traverse rates on X/Y/Z
- 1.0g (9.8 M/sec²) axis acceleration/deceleration on X/Y/Z
- Dual range 50 HP gearless AC spindle features ceramic bearings
- Refrigerated & temperature controlled spindle and ballscrews
- Spindle ramps to 15,000 RPM in just 1.9 seconds
- High torque 250 Nm spindle as standard
- Accuracy 0.000080", full travels on X/Y/Z, repeatability ± 0.000040"
- Automatic Tool Changer with 1.2 second tool-tool, 3.2 second chip-chip
- Rotary Automatic Pallet Changer exchanges 1,100 lbs./pallet in 7 seconds
- Large work area, compact footprint - ideal for FMS Pallet Systems
- Design for reliability - 5,000 hour mean time between failure (MTBF5000H)

GE460H MACHINE SPECIFICATIONS



AXIS TRAVEL

| | |
|----------------------------------|--------------|
| X Axis | 23.6" |
| Y Axis | 23.6" |
| Z Axis | 23.6" |
| Table top to spindle centerline | 2.75"~26.2" |
| Table centerline to spindle face | 5.9" ~ 29.6" |

FEEDRATES

| | |
|-----------------------------------|--------------------------------|
| Rapid traverse (X/Y/Z) | 3,543 IPM |
| Cutting feedrate | 0 ~ 3,543 IPM |
| Acceleration/Deceleration (X/Y/Z) | 1.0g (9.8 M/sec ²) |
| Feed motors, AC Servo | 7.4 HP (X/Y/Z) |

SPINDLE

| | |
|--------------------------|--------------------------------|
| Spindle taper | BIG Plus/CAT40 interchangeably |
| Spindle bearing diameter | 2.8" (4 Bearing) |
| Spindle power/type | 50 HP/integral |
| Full power developed at | |
| Low Range | 1,061 RPM |
| High Range | 5,000 RPM |
| Spindle ramp-up time | 1.9 seconds (15,000 RPM) |
| Rigid tapping (max. rpm) | 4,000 RPM |
| Lubrication type | Air-oil mist, refrigerated |

ACCURACY

| | |
|----------------------------------|---------------|
| Positioning, full stroke (X/Y/Z) | 0.000080" |
| Repeatability | +/- 0.000040" |

AUTOMATIC TOOL CHANGER

| | |
|------------------------------|---------------|
| Magazine capacity | 60 (118, 180) |
| Maximum tool diameter | 2.95" |
| with adjacent pockets empty | 6.3" |
| Maximum tool length | 13.78" |
| Maximum tool weight | |
| Full speed | 17.6 lbs. |
| Reduced Speed (programmable) | 26.4 lbs. |
| Tool change time (tool-tool) | 1.2 seconds |
| Tool change time (chip-chip) | 3.2 seconds |

AUTOMATIC PALLET CHANGER

| | |
|-------------------------------|-----------------------|
| Pallet size | 15.7" x 15.7" |
| Capacity per pallet/total | 1,100 lbs./2,200 lbs. |
| Minimum index | 1° (360 positions) |
| Pallet index time (90° index) | 1.2 seconds |
| Pallet change time | 7.0 seconds |

MACHINE ELECTRICS

| | |
|----------------------------------|--------|
| AC 200/220V ± 10%, 3 Phase, 60Hz | 60 KVA |
|----------------------------------|--------|

MACHINE DIMENSIONS & WEIGHTS

| | |
|--|-------------------|
| L x W x H (length includes chip conveyor) | 212" x 99" x 117" |
| Weight | 25,200 lbs. |

Note: specifications and equipment supplied subject to change without notice

STANDARD EQUIPMENT

- Fanuc 31iMB control
- Fanuc 50 HP spindle drive
- Fanuc axis servo drives
- BIG Plus/CAT40 spindle taper, interchangeably
- 400 mm pallets (15.7" x 15.7")
- Rotary automatic pallet changer
- 60-tool automatic tool changer
- 15,000 RPM integral spindle
- Ceramic spindle bearings
- Full 4th axis (360,000 positions)
- High volume rolling filter chip conveyor
- Spindle air curtain
- Spindle oil chiller
- Coolant thru-spindle (256 PSI)
- Spindle flood coolant
- Bed flush coolant
- Ceiling shower coolant
- Refrigerated & temperature controlled spindle and ballscrews
- Manual pulse generator
- Spindle speed override
- Feedrate/rapid traverse override
- LED work light
- Three-stage stack light
- Totally enclosed splash guard with manual operated doors
- Door interlock
- CE spec
- Inch/metric switchable capability
- Helical interpolation
- 2MB total program memory
- Automatic corner override
- Tool offset memory type C
- 200 tool offsets
- Custom macro "B"
- Additional macro variables
- Additional registrable programs
- High speed skip

OPTIONS AVAILABLE

- HSK 63A spindle taper
- 118 & 180 tool capacity ATC
- 20,000 RPM spindle
- Spindle probe
- Broken tool detector
- Tool life management
- Additional tool offsets to 999
- Additional work coordinates to 300 sets
- Enshu die mold package
- Dataserver with fast Ethernet
- FMS pallet systems



Distributed by



(470) 395-9295

www.texmacmachinetools.com